

# AN-010 API Interface Specification

OmniPreSense radar sensors have an easy to use API to control their output. The simple commands can be used to configure the operation and output information provided by the sensor. Over time OmniPreSense will enhance the capabilities of its sensors by adding new features and functionality. These will come as new code versions which can be flashed to the board while keeping backwards compatibility.

## Radar Sensor Types

OmniPreSense provides two different types of sensors, a Doppler radar sensor reporting motion, speed, and direction, and an FMCW radar sensor reporting range. The feature differences for each sensor is shown in Table 1. The following API commands pertain to both types of sensors except for special cases. In these cases, this document will call out the special command for either a Doppler (-A), FMCW (-B), or combination (-C) radar sensor.

*Table 1. Radar Sensor Feature Matrix*

Sensor	Type	Motion	Speed	Direction	Signal Magnitude	Range	FCC/IC Modular Approval	Detection Range (RCS = 10)
OPS241-A	Doppler	•	•	•	•			20-25m
OPS242-A	Doppler	•	•	•	•		•	20-25m
OPS243-A	Doppler	•	•	•	•		• (pending)	75-100m
OPS241-B	FMCW				•	•		15-20m
OPS243-C	FMCW & Doppler	•	•	•	•	•	• (pending)	50-60m

## Terminal Control

A simple Command Terminal can be used to control the module operation with the API commands. Examples of simple but very useful Command Terminals are [Tera Term](#) and [PuTTY](#). Both are free, open source terminal tools for the PC/Mac and embedded processors (Raspberry Pi, etc.) which can easily connect to a serial port and accept data over USB from the OmniPreSense module.

To begin using the OmniPreSense sensor, first download Tera Term or PuTTY onto your PC/Mac or embedded processor. With the OmniPreSense sensor plugged into the USB port of your system, start Tera Term or PuTTY. A configuration window such as Figure 1 or Figure 2 will appear. Tera Term can detect the active COM port (greyed out to right of Serial button if TCP/IP is selected). Select the Serial button and press OK. For PuTTY, you'll need to know which COM port is used, set its value, select the Serial button, and Open.

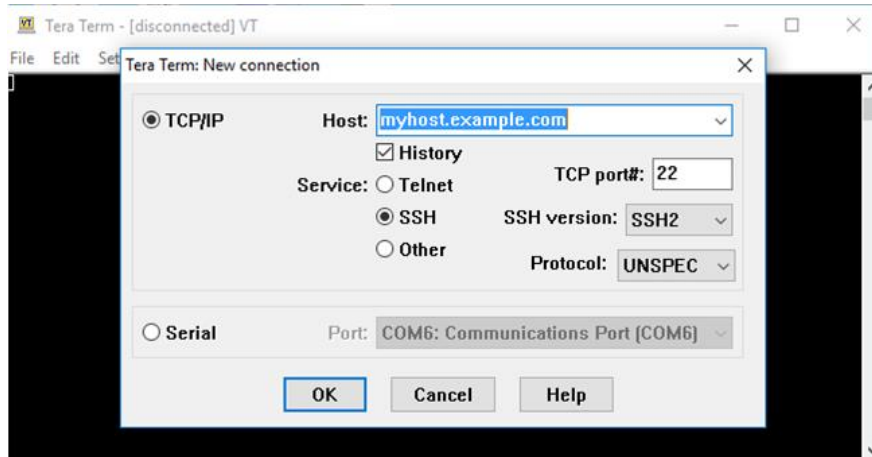


Figure 1. Tera Term Startup Menu

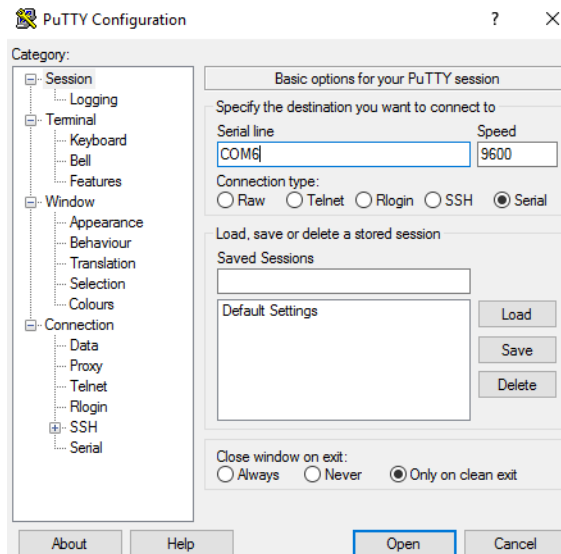


Figure 2. PuTTY Startup Menu

Once connected, the data reported by the sensor will start streaming to the terminal when an object either in motion appears (-A & -C Doppler radar sensors) or there are objects in the sensors field of view (-B and -C FMCW radar) to report the range. The default settings are shown in Table 2. If there is no object moving in front of the sensor or it's not pointing at any object, no data is reported or streamed to the terminal. A simple wave of the hand will show data like that shown in Figure 3. Any of the API commands can now be executed to change the output data or query the configuration.

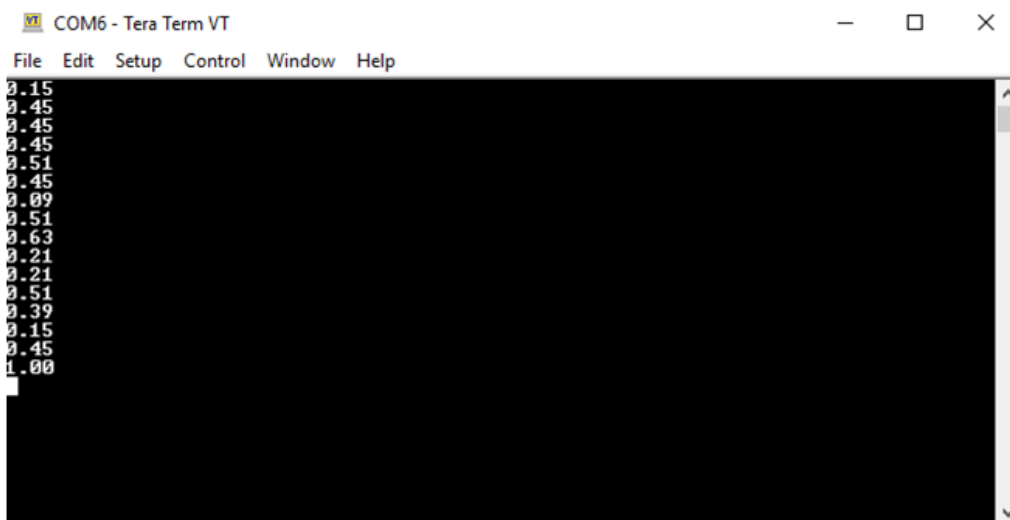


Figure 3. Streaming Data with Tera Term



Figure 4. Streaming Data with PuTTY

## Default Settings

The default settings of the sensor are set to provide solid performance over a wide range of applications. Upon power-up the default settings are used, and operation begins. The user can configure the sensor for their particular application and save the settings as the new default settings (A! command). The default settings are listed in Table 2.

Table 2. Default Settings

API Command	API Command	Doppler (-A) Default Value	FMCW (-B) Default Value	Doppler & FMCW (-C) Default Value
Output Units	UM/uM	m/s	m	m/s, m
Data Precision	F2	2	1	1/1
Doppler Sampling Rate	SX	10,000	N/A	10,000
Doppler Sampling Buffer Size	S>	1024	N/A	512
Simple Motion Interrupt	IG	Off	Off	Off
Reported Speed Filter	R>n, R<n	Off	N/A	Off
Reported Direction Filter	R	Off	N/A	Off
Reported Range Filter	r>n, r<n	N/A	Off	Off
Magnitude Filter	M>n, M<n (Doppler) or m>n, m<n (FMCW)	>10 (>20 for OPS243-A)	>150	>20
JSON Output	OJ	Off	Off	Off
LED Control	OL	On	On	On
Magnitude Report	OM	Off	Off	Off
Number of Data Points per Report	On	1	1	1
Raw Data Output	OR, oR	Off	Off	Off
Post FFT Data Output	OF, oF	Off	Off	Off
Speed or Range Report	OS/OD	On	On	On
Time Report	OT	Off	Off	Off
Output Units	OU	Off	Off	On
Sensor Power Mode	PA	Active	Active	Active
Power Level	PX	On	On	On

## Speed Operating Range (-A Doppler only)

The maximum speed reported is determined by the Sampling Frequency. For slow moving objects, a sample rate of 5,000 (SV command) is perfectly fine. The default setting of 10,000 (SX command) provides a detectable speed of up to 31.1 m/s (69.5 mph) while 20,000 (S2 command) provides up to 62.2 m/s (139.1 mph). The resolution of the reported speed increases as the sample frequency goes down. The range of values is summarized in Table 3.

Table 3. Maximum Operating Speeds

Sample Frequency	API Command	Maximum Speed (m/s)	Maximum Speed (mph)	Resolution* (m/s)	Resolution* (mph)
1,000	SI	3.1	7.0	0.006	0.014
5,000	SV	15.5	34.8	0.030	0.068
10,000	SX	31.1	69.5	0.061	0.136
20,000	S2	62.2	139.1	0.121	0.272
50,000	SL	155.4	347.7	0.304	0.679
100,000	SC	310.8	695.4	0.608	1.358

\* 1024 buffer size, 512 buffer size accuracy will be twice these values, 256 four times. OPS243-C uses 512 buffer size for Doppler operation.

## API Commands

The following are the API commands supported by the OPS241, OPS242, and OPS243. These commands can be sent by typing into the command terminal to change settings on the sensor or control its operation. The commands provided include simple queries to fetch information about the sensor and its settings or write commands which control or change the operation of the sensor.

**Module Information** – returns information about the module and its setting.

Command	Name	R/W	Value
??	Module Information	Read	{ "Product": "OPS242" } { "Version": "1.3.9" } { "SamplingRate": 10000, "resolution": 0.0607 } { "SampleSize": 1024 } { "Clock": "54" } { "Q2COUNT": "1149 (~22980 counts/sec @t=37)" } { "PowerMode": "Continuous" } { "Squelch": "100" } { "RequiredMinSpeed": "0.000" }
?R	Reset Reason	Read	Provides the reason why sensor reset. { "ResetReason": "Status from bitmask", "Power On" : true, "Supply Watchdog" : true, "Power Validation" : true }

**Module Part Number** – returns model number of sensor as either OPS241, OPS242, or OPS243.

Command	Name	R/W	Value
?P	Module Part Number	Read	{ "Product": "OPS241 FMCW" }

**Firmware Version/Board ID** – returns current firmware version of the module. Firmware version consists of a major revision, minor revision, and patch revision in the form of xx.yy.zz.

Command	Name	R/W	Value
?V	Firmware Version Number	Read	{ "Version": "1.3.9" }
?B	Firmware Build Number	Read	{ "Build": "20181005_1335" }
?U	Unique Board ID	Read	{ "UID": "b2000040b7a12400d5188041" }

**Speed Output Units (-A, -C Doppler)** – read or set the units for the velocity output. Units supported include m/s (default), cm/s, ft/s, km/hr, and miles per hour.

Command	Name	R/W	Value
U?	Current Velocity Units	Read	{"Units":"m-per-sec"}
UC	Centimeters per second	Write	{"Units":"cm-per-sec"}
UF	Feet per second	Write	{"Units":"ft-per-sec"}
UK	Kilometers per hour	Write	{"Units":"km-per-hr"}
UM	Meters per second	Write	{"Units":"m-per-sec"}
US	Miles per hour	Write	{"Units":"mph"} Calculations are based on the international mile (1,609.344 m per mile).

**Range Output Units (-B, -C FMCW)** – read or set the units for the range output. Units supported include meter (default), centimeter, feet, inch, and yards.

Command	Name	R/W	Value
u?	Current Range Units	Read	{"Units":"Value", "RangeUnit":"m"}
uM	Meters	Write	{"Units":"Value", "RangeUnit":"m"}
uC	Centimeters	Write	{"Units":"Value", "RangeUnit":"cm"}
uF	Feet	Write	{"Units":"Value", "RangeUnit":"ft"}
uI	Inch	Write	{"Units":"Value", "RangeUnit":"in"}
uY	Yards	Write	{"Units":"Value", "RangeUnit":"yd"}

**Data Precision** – set the number of decimal digits for the data reported.

Command	Name	R/W	Value
Fn	Decimal Places	Write	Set n to the number of decimal places to be reported. For example, setting to F2 will report 2 decimal places (ex. 10.35). F0 will provide the integer value only. Valid values of n are 0-5.
F?	Decimal Place Setting	Read	Query the number of decimal places set.

**Sampling Rate/Buffer Size (-A, -C Doppler)** – set these values to control the sample rate of the module. This setting influences the output data and the rate at which the data is reported. The buffer size influences the report rate and resolution. A buffer size of 512 will have a report rate between 5-30Hz. The resolution becomes worse by a factor of two with a 512-buffer size versus 1024 (Figure 5) and worse again at 256 buffer size.

Command	Name	R/W	Notes
SI	1K samples/second	Write	
SV	5K samples/second	Write	
SX or S1	10K samples/second	Write	
S2	20K samples/second	Write	
SL	50K samples/second	Write	
SC	100K samples/second	Write	
S>	1024 buffer size	Write	1024 samples are collected before processing
S<	512 buffer size	Write	512 samples are collected before processing
S{	256 buffer size	Write	256 samples are collected before processing

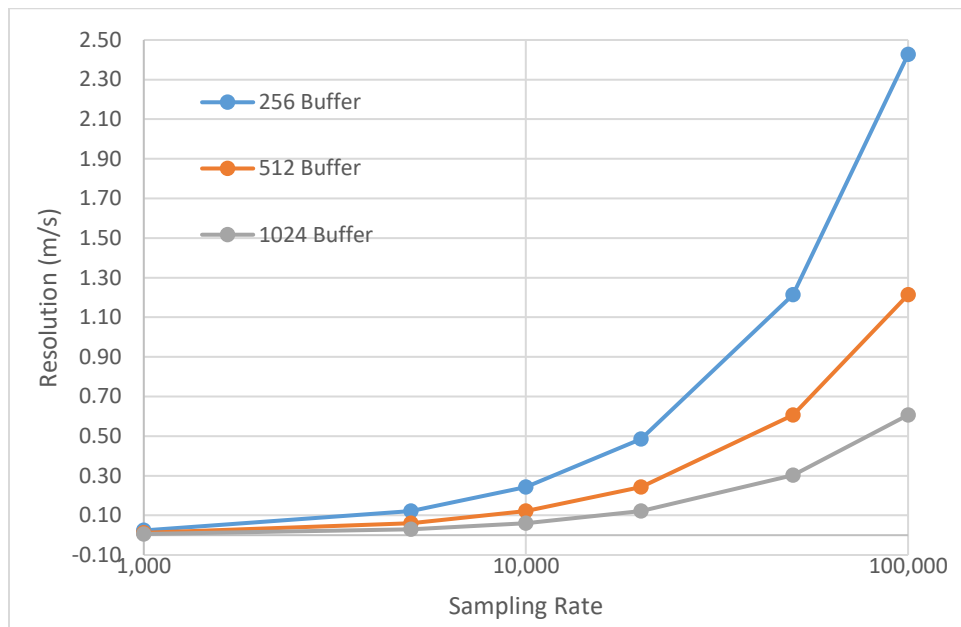


Figure 5. Doppler (-A) Buffer Size versus Resolution



**Reported Speed/Range/Direction Filter** – use these settings to set the range of data to report. Settings are available for either a minimum or maximum value below or above which data will not be reported. Commands are available to set speed, range, and direction of speed filters. These filters can be used to help set sensitivity levels of detection. This command requires a return (↵) after the number. Direction filter allows reporting only a single direction or both.

Command	Name	R/W	Notes
R>n	Reported Minimum Speed Filter	Write	n is any number upon which no detected speeds below that number will be reported. R>0 resets to no limit. Doppler (-A, -C) radar only.
R<n	Reported Maximum Speed Filter	Write	n is any number upon which no detected speeds above that number will be reported. R<0 resets to no limit. Doppler (-A, -C) radar only.
r>n	Reported Range Filter	Write	n is any number upon which no detected range below that number will be reported. r>0 resets to no limit. FMCW (-B, -C) radar only.
r<n	Reported Range Filter	Write	n is any number upon which no detected range above that number will be reported. r<0 resets to no limit. FMCW (-B, -C) radar only.
R?	Report Current Speed Filter	Read	Reports current settings of the speed filter
r?	Report Current Range Filter	Read	Reports current settings of the range filter
R+	Inbound Only Direction	Write	Only reports inbound direction
R-	Outbound Only Direction	Write	Only reports outbound direction
R	Clear Direction Control	Write	Reports both directions

**Frequency Control (-A, -C Doppler)** – use this setting to set the desired transmit frequency. Set *n* to a positive or negative number to set the frequency. T=0 is the default setting targeting 24.125GHz.

For the OPS241-A, OPS242-A, and OPS243-A, each increment steps approximately 18MHz. The programming steps are limited to 24.0 through 24.25GHz for the OPS242/OPS243 and up to 25.6GHz operation for the OPS241-A. The limits on *n* are -6 (24.0GHz) and 93 (25.6GHz) for the OPS241 and -2 (~24.0GHz) to 2 (~24.25GHz) for the OPS242-A/OPS243-A which has some guard banding to ensure it stays within the 24.0-24.25GHz ISM band.

The OPS243-C provides much finer frequency resolution control between 24.005 and 24.245GHz in 1MHz steps (0.004%). The default operation is at 24.005 (T=-120).

See Figure 6 for approximate values of *n* for each frequency. Depending on the spread between the current frequency and the newly set frequency, there may be a long settling time on the order of 5-10 seconds or longer based on the size of the jump in values. Writing ?F will provide the current transmitter output frequency.

Command	Name	R/W	Value
T=n	Frequency Setting	Write	T=0 is the default setting for 24.125GHz.
?F	Frequency Output	Read	?F returns the output CW frequency of the transmitter in GHz for the OPS241-A, OPS242-A, and OPS243-A.
T?	Frequency Output	Read	?T returns the output CW frequency of the transmitter in GHz for the OPS243-C.

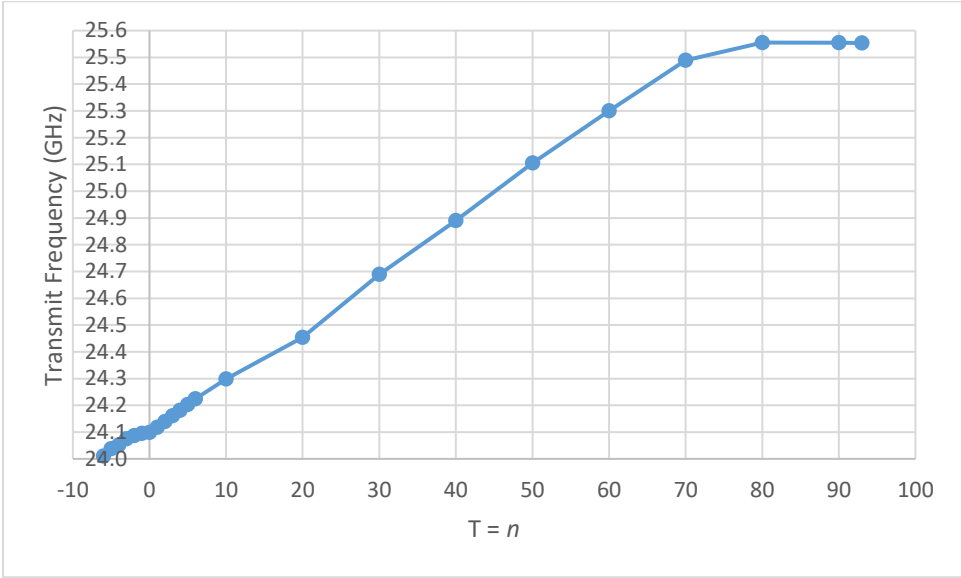


Figure 6. Frequency Setting T Values OPS241-A, OPS242-A, and OPS243-A

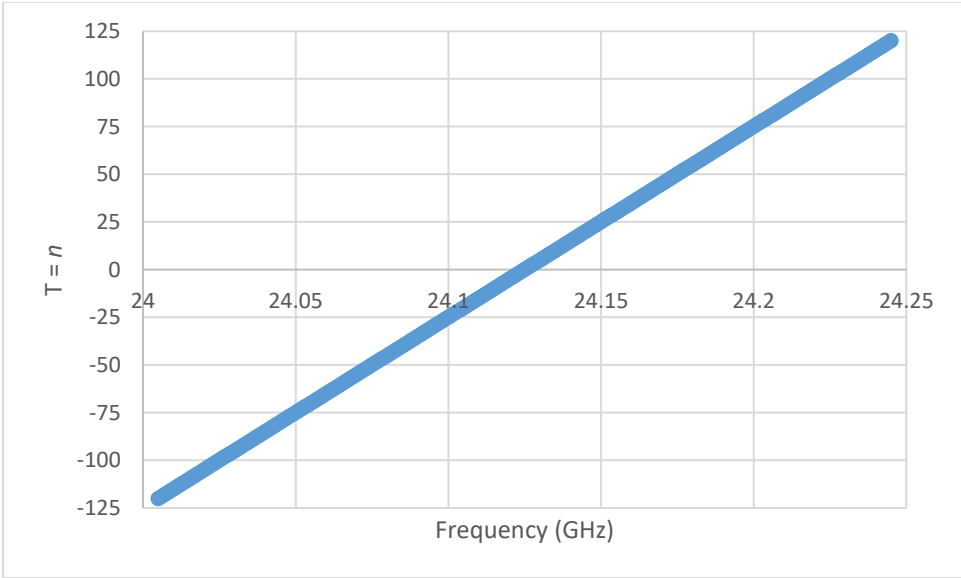


Figure 7. T Value versus Frequency Setting for OPS243-C

**Data Output** – set to control the data output. In general, use capital Ox for Doppler control and little ox for FMCW control.

Command	Name	R/W	Value
OD	Range Report	Write	Turn range reporting on or off. Default operation range is reported. Use Od to turn it off and OD to turn it back on. FMCW (-B, -C) radar only.
OS	Speed Report	Write	Turn speed reporting on or off. Default operation speed is reported. Use Os to turn it off and OS to turn it back on. Doppler (-A, -C) radar only.
OF	FFT Output On	Write	Results from the FFT processing of each buffer is sent. Data is output with json output format. For Doppler, use Of to turn FFT output off. For FMCW, use oF to turn on and of to turn off. For OPS243-C, either speed or range but not both can be output at the same time. It's not recommended to use OF with UART, especially at low baud rates.
OG	Object Sensor Light	Write	Enables White light when Object Sensor is enabled (IG) and an object is detected. Disable the light with Og. By default, the object sensor light is disabled.
OC	Processing Light Activity	Write	Enables lights showing processing activity. Use OC for Doppler (-A, -C) and oC for FMCW (-B, -C) sensors. Disable the lights with Oc or oc. By default, the processing activity lights are disabled.
OJ	JSON Mode	Write	Turns on output to format data in JSON format. An example would output: {"speed":0.58, "direction":"inbound", "time":105, :tick":135}. Use Oj to turn off JSON mode.
OL	LED Control	Write	Turn the LEDs on (OL) or off (OI). Turning off the LED's can save approximately 10mA of current consumption.
OM	Magnitude Report	Write	Turn on reporting of the magnitude associated with the speed. The magnitude is a measure of the size, distance, and reflectivity of the object detected. For Doppler, type Om to turn magnitude off. When turned on, magnitude information is reported before speed/range information. For FMCW, type oM to turn on and om to turn off.
On	Number of Reports	Write	Define how many reports to provide. n is a number between 1 and 9. The number n applies to magnitude and speed reports.

Command	Name	R/W	Value
OR	Raw ADC Output On	Write	I and Q output buffers from the ADC will be sent. Data output will alternate between the I and then Q buffer. For Doppler, Or turns off raw ADC reporting. For FMCW, use oR to turn on and or to turn off. For OPS243-C, either speed or range but not both can be output at the same time. It's not recommended to use OR with UART, especially at low baud rates.
OT	Time Report	Write	Turn the time report on. Time is reported as the seconds and milliseconds since the last reboot or power on. For example, 137.429, 3.6 is read as 137 seconds and 429 milliseconds with a speed of 3.6 m/s. If magnitude is turned on, the data is provided as time, magnitude, speed.
OU	Units Report	Write	Report the current unit setting with each report. Default units is turned on. Use Ou to turn off for Doppler. Type oU to turn units report on and ou to turn it off for FMCW.
OV	Largest Report Order	Write	Changes the default order of the speed or range reported from based on largest signal magnitude first to largest speed/range value first. Use OV for speed and oV for range. Use Ov or ov to return to ordering by signal magnitude (Ov for OPS241-B).
O/	Smallest Report Order	Write	Changes the default order of the speed or range reported from based on largest signal magnitude first to smallest speed/range first. Use O/ for speed and o/ for range (O/ for OPS241-B).
BZ BL BS BC BT BV	Blank Data Reporting	Write	If measured data does not meet filtering criteria, sensor will report out a character with every sampling interval. BZ will report zero value. BL will report blank lines. BS will report a space. BC will report with a comma. BT will report a timestamp. Use BV to turn off.

**UART Control** – set to control the UART interface. The default configuration is 8-bits, no parity, 19,200 baud rate, and 1 stop bit. The OPS241, OPS242, and OPS243 will start reporting out on the UART immediately after power on. If the USB is enumerated, the UART reporting will be shut off and data will be reported out USB. It's not recommended to use OF with UART, especially at low baud rates.

Command	Name	R/W	Value
I?	Query Baud Rate	Read	Outputs current baud rate and oversampling setting.
In	Baud Rate	Write	Set n to values 1, 2, 3, 4, or 5 based on desired baud rate. I1 = 9,600 I2 = 19,200 (default) I3 = 57,600 I4 = 115,200 I5 = 230,400

**Simple Object Detection Interrupt** – a simple output which trips if an object in motion or object in range is detected. The signal is toggled on the interrupt pin (pin 3, J8 on OPS242; pin 6, J5 OPS241; pin 3, J3 on OPS243). For the Doppler (-A, -C) radar sensors, the pin is high when no motion is present and low when motion is detected. For the FMCW (-B, -C) radar sensors, the pin is high when no object is in the detected region and set low when an object is detected in the detection region. For Doppler (-A, -C) radar sensors the interrupt can be filtered on speed ( $R > n$ ,  $R < n$ ), signal magnitude ( $M > n$ ,  $M < n$ ), and direction ( $R+$ ,  $R-$ ,  $R|$ ). For FMCW (-B, -C) radar sensors, the interrupt can be filtered on range ( $r > n$ ,  $r < n$ ) and signal magnitude ( $m > n$ ,  $m < n$ ). Figure 8 shows how filtering can allow detection for certain objects and mask out others.

Command	Name	R/W	Value
IG	Object Detection Interrupt	Write	Turn object detection interrupt on. Use "Ig" to turn off.

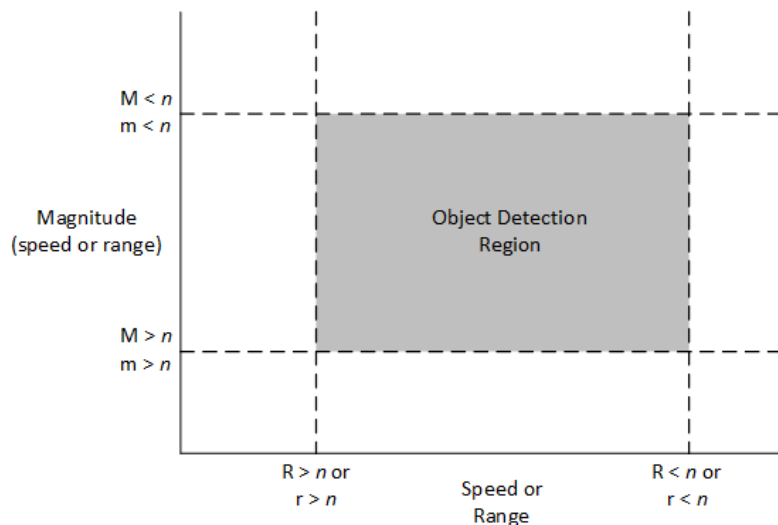


Figure 8. Speed, Range and Magnitude Filtering

**Simple Counter** – counts objects which meet the speed/range and signal magnitude filtering settings. The counter will count the number of objects over time which meet the filtering settings for speed/range and signal magnitude. The count is not reported but can be queried with the N? command. The count can be reset with the N! command. A count is triggered if 2 or more consecutive reports meet the threshold limits. Once detected, the object is set to be counted until 4 reports missing the threshold limits are seen. The value to start a count (default 2) can be set with the N>n command. The value to end a count (default 4) can be set with the N<n command. To start a new count, clear the running count with the N! command.

Command	Name	R/W	Value
N?	Query Count	Read	Reports number of objects counted. {"DetectedObjectCount":3}
N!	Reset Count	Write	Resets the number of objects in counter. {"DetectedObjectCount":0}
N>n	Count Start Threshold	Write	{"MotionSignal":"Status", "CountToPass":2, "CountToFail":4}
N<n	Count End Threshold	Write	{"MotionSignal":"Status", "CountToPass":2, "CountToFail":3}

**Clock** – set to control the reporting of the time. The time is measured in seconds/milliseconds from power on of the module. Use the OT command to report the time in seconds and milliseconds. When the module is put in low power state (PI), the clock will continue counting. If you wish for the module to provide “the real time”, then set it to “the Unix Epoch time” (see [wikipedia.org/wiki/Unix\\_time](http://wikipedia.org/wiki/Unix_time)).

Command	Name	R/W	Value
C?	Query Time	Read	Ex. {"Clock":50} reports 50 seconds since power on.
C=n	Set Time	Write	Reset the clock start time. For example, n = 10 will start the clock at 10 seconds and then continue counting.

**Module/Transmit Power** – set to control the operating mode (PA, PI, PP) or the transmit power. The typical maximum transmit power is 9 dB. Reducing the transmit power does not reduce the overall power consumption of the module. Note that the detection range will decrease with decreased transmit power.

Command	Name	R/W	Value
P?	Active Power State	Read	Reports current power state.
PA	Active Power Mode	Write	Normal operating mode.
PI	Idle Power Mode	Write	No activity, waits for Active Power command. The RF is powered down for further power savings.
PP	Single Pulse	Write	Use to capture and process a single pulse and buffer of data. Use when the sensor is set to PI mode.
P7 or PN	Transmit Power Control or Min Power	Write	Transmit is set at -9 dB below max power.
P6	Transmit Power Control	Write	Transmit is set at -6 dB below max power.
P5	Transmit Power Control	Write	Transmit is set at -4 dB below max power.
P4	Transmit Power Control	Write	Transmit is set at -2.5 dB below max power.
P3 or PD	Transmit Power Control or Mid Power	Write	Transmit is set at -1.4 dB below max power.
P2	Transmit Power Control	Write	Transmit is set at -0.8 dB below max power.
P1	Transmit Power Control	Write	Transmit is set at -0.4 dB below max power.
P0 or PX	Transmit Power Control or Max Power	Write	Transmit power is set at its maximum value with maximum range. PX has additional “overdrive” of 0.2 dB when utilized.
PO	Transmit Off	Write	Turn transmit off and put in sensor in receive only mode. Use P! to turn transmit back on.
P!	System Reset	Write	Full system reset including the clock.

**Short Duty Cycle Control** – set to control duty cycle operation under 1 second. The time set is the amount of time the sensor will delay between outputting the last report and starting the next report.

Command	Name	R/W	Value
W?	Current Delay time	Read	
W0	0 delay between reports	Write	
W1	1ms delay	Write	
WV	5ms delay	Write	
WX	10ms delay	Write	
W2	20ms delay	Write	
WL	50ms delay	Write	
WC	100ms delay	Write	
WD	500ms delay	Write	
WM	1000ms delay	Write	
Wn	n*100ms delay	Write	$0 \leq n \leq 9$

**Long Duty Cycle Control** – set to control the duty cycle operation greater than or equal to 1 second. The time set is the amount of time the module will sleep between transmit/receive pulses and processing. For settings longer than 1 second, the RF will be powered off to save power. In this manner, lower power operation may be achieved.

Command	Name	R/W	Value
Z?	Current sleep setting	Read	
Z0	Sleep 0 Second	Write	Use to set back to normal operation.
Z1	Sleep 1 Second	Write	
ZV	Sleep 5 seconds	Write	
ZX	Sleep 10 seconds	Write	
ZL	Sleep 50 seconds	Write	
ZC	Sleep 100 seconds	Write	
Z2	Sleep 200 seconds	Write	
Zn	Sleep n*100 seconds	Write	$0 \leq n \leq 9$
Z=n	Set Sleep Time	Write	Set the amount of time to sleep between data processing. Ex., n = 5 would set the module to sleep for 5 seconds (RF powered off) between a transmit/receive pulse and processing. $0 \leq n \leq 4,294,967$



**Magnitude Control** – provides control over the sensitivity of the module to detect moving objects. Low numbers are most sensitive, high numbers are least sensitive.

Command	Name	R/W	Value
M?	Current speed magnitude setting	Read	Doppler (-A, -C) radar only.
m?	Current range magnitude setting	Read	FMCW (-B, -C) radar only.
M>n	Low Speed Magnitude Filter	Write	n is any number upon which no detected magnitudes below that number will be reported. M>0 resets to no limit. Doppler (-A, -C) radar only.
M<n	High Speed Magnitude Filter	Write	n is any number upon which no detected magnitudes above that number will be reported. M<0 resets to no limit. Doppler (-A, -C) radar only.
m>n	Low Range Magnitude Filter	Write	n is any number upon which no detected magnitudes below that number will be reported. m>0 resets to no limit. FMCW (-B, -C) radar only.
m<n	High Range Magnitude Filter	Write	n is any number upon which no detected magnitudes above that number will be reported. m<0 resets to no limit. FMCW (-B, -C) radar only.

**Persistent Memory** – saves current configuration into flash memory and is retained even if power is removed.

Command	Name	R/W	Value
A!	Save Configuration	Write	Saves current configuration settings in flash memory. Upon power loss or recycling power, the saved configurations will be used as the default.
A.	Read Settings	Write	Read the current flash settings.
AX	Reset Flash Settings	Write	Will overwrite current saved settings and return to the factory default settings.

## Appendix

Table 4. OPS241-A/OPS242-A/OPS243-A Doppler Radar Feature versus Code Version Matrix

Feature	V1.2.1	V1.3.0	V1.3.1	V1.3.2	V1.3.3	V1.3.5/ V1.3.8 and V1.0.4	Notes
Module Information	•	•	•	•	•	•	
Module Part Number	•	•	•	•	•	•	
Firmware Version	•	•	•	•	•	•	
Firmware Build	•	•	•	•	•	•	
Speed Output Units	•	•	•	•	•	•	
Data Precision	•	•	•	•	•	•	
Sampling Rate	•	•	•	•	•	•	
Buffer Size	•	•	•	•	•	•	
Reported Speed Filter	•	•	•	•	•	•	V1.3.0 with min/max
Reported Direction Filter	•	•	•	•	•	•	
Frequency Control	•	•	•	•	•	•	OPS242 and OPS243 limited to 24-24.25GHz
Frequency Reporting	•	•	•	•	•	•	
256 Buffer Size	•	•	•	•	•	•	
LED Control	•	•	•	•	•	•	
Number Reports	•	•	•	•	•	•	
Magnitude Report	•	•	•	•	•	•	
Speed Report	•	•	•	•	•	•	
Time Report	•	•	•	•	•	•	
Zero Reporting	•	•	•	•	•	•	
Timing Report	•	•	•	•	•	•	
Module Power	•	•	•	•	•	•	
Transmit Power	•	•	•	•	•	•	
Duty Cycle Control	•	•	•	•	•	•	
Debug Modes	•	•	•	•	•	•	
UART Interface		•	•	•	•	•	
Maximum Speed		•	•	•	•	•	
Motion Interrupt			•	•	•	•	
Min/Max Magnitude Filter			•	•	•	•	
Watchdog Timer			•	•	•	•	
Persistent Memory				•	•	•	
System Reset				•	•	•	
Simple Counter						•	

Table 5. OPS241-B FMCW Radar Feature versus Code Version Matrix

<b>Feature</b>	<b>V1.0.0</b>	<b>V1.0.5</b>	<b>Notes</b>
Module Information	•	•	
Module Part Number	•	•	
Firmware Version	•	•	
Firmware Build	•	•	
Range Output Units	•	•	
Data Precision	•	•	
Range & Magnitude Filter	•	•	
Automatic Calibration		•	

## Revision History

Version	Date	Description
A	Apr. 19, 2017	Initial release.
G	November 14, 2018	Added changes incorporated into V1.3.1 <ul style="list-style-type: none"> <li>• Simple motion detection interrupt</li> <li>• Magnitude filter (<math>M &gt; n</math>, <math>M &lt; n</math>)</li> <li>• Watchdog timer added</li> <li>• Reset Reason (?R) added</li> <li>• Unique board ID (?U)</li> <li>• Tighter tuning tolerance</li> <li>• Modified the JSON output of "??", "?S", "I?", "P?", "S?", "R?", and "Q?"</li> </ul>
H	December 19, 2018	Added changes incorporated into V1.3.2 <ul style="list-style-type: none"> <li>• Added Persistent memory (A!)</li> <li>• Enabled system reset (P!)</li> </ul>
J	March 11, 2019	Added changed incorporated into V1.3.3 <ul style="list-style-type: none"> <li>• Fixed frequency calibration issue which could cause out of frequency lock</li> <li>• Corrected simple motion interrupt ("IG") pin for OPS241</li> </ul>
K	May 10, 2019	Added FMCW range reporting API information <ul style="list-style-type: none"> <li>• Added all range API settings</li> <li>• Called out Doppler (-B) and FMCW (-A) commands</li> <li>• Removed Squelch and Debug commands</li> <li>• Corrected Fig. 5 for resolution as opposed to accuracy</li> </ul>
M	May 22, 2019	Added changes incorporated into V1.3.5 <ul style="list-style-type: none"> <li>• Added support for OPS243-A Doppler radar sensor</li> <li>• Added Simple Counter commands</li> <li>• Added OU command for turning units on/off</li> </ul>
N	June 20, 2019	Added changes incorporated into V1.3.8 <ul style="list-style-type: none"> <li>• Improvement on UART Tx handling</li> <li>• Fix for periodic timer report error</li> <li>• Pulse mode will always report value</li> <li>• Added warning about using OR and OF with UART</li> </ul>
P	July 30, 2019	Added changes incorporated into V1.0.2 (OPS243-A) <ul style="list-style-type: none"> <li>• Minor fixes with persistent memory</li> <li>• IG counting always on</li> </ul> Added changes incorporated into V1.0.5 (OPS241-B) <ul style="list-style-type: none"> <li>• Automatic calibration control added</li> </ul>
Q	September 30, 2019	Added support for OPS243-C FMCW & Doppler radar sensor Added support for V1.0.3 (OPS243-A)